



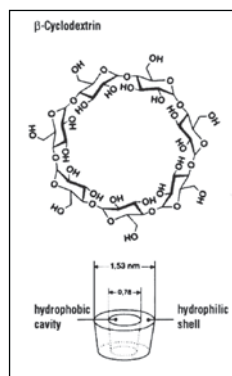
## Merck液相色谱柱

# ChiraDex

ChiraDex 可以用来分离多种手性对映体。ChiraDex 的填料采用了 $\beta$ -环糊精通过共价键键合到球形硅胶上，适合用来对烃类化合物、固醇类、苯酚酯及其衍生物、芳胺、多元杂环等进行手性拆分。流动相洗脱条件通常

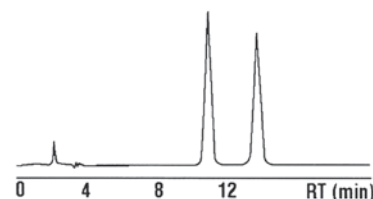
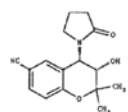
### 填料参数

Sorbent characteristics:	ChiraDex® Silica particles with covalently bonded $\beta$ -cyclodextrin
Particle shape:	spherical
Particle size:	5 $\mu\text{m}$
Pore size:	100 $\text{\AA}$ (10 nm)
Spec. surface area:	300-360 m <sup>2</sup> /g
Chiral selector:	$\beta$ -cyclodextrin
pH range:	pH 3 - 7.5
Shipping eluent:	Methanol/Water

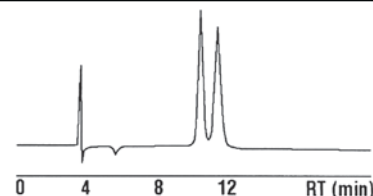
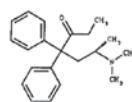


### 应用

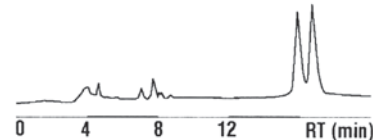
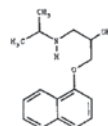
Cromakalim:	
Column	LiChroCART® 250-4 ChiraDex®
Mobile phase	Water/Methanol 80/20 (v/v)
Flow rate	0.8 ml/min
Detection	UV 254 nm



Methadone:	
Column	LiChroCART® 250-4 ChiraDex®
Mobile phase	Triethylammonium acetate solution (1%) pH 4.1/Acetonitrile 98/2 (v/v)
Flow rate	0.8 ml/min
Detection	UV 254 nm



Propranolol:	
Column	LiChroCART® 250-4 ChiraDex®
Mobile phase	Acetonitrile/Methanol/Acetic acid/ Ammonia (25%) 95/4.6/0.3/0.1(v/v/v/v)
Flow rate	0.7 ml/min
Detection	UV 254 nm



Verapamil:	
Column	LiChroCART® 250-4 ChiraDex®
Mobile phase	Methanol/Triethylammonium acetate solution (1%) pH 4.1 2/98 (v/v)
Flow rate	1.0 ml/min
Detection	UV 254 nm

