



## Merck液相色谱柱

# Lichrospher

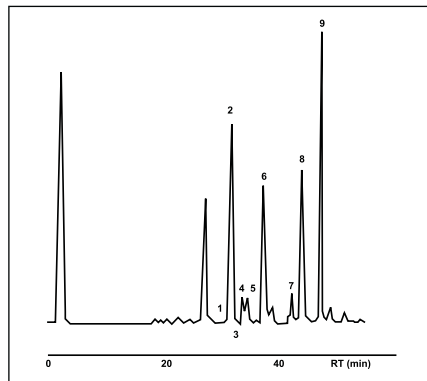
作为20世纪最知名的液相色谱柱之一，Lichrospher为广大色谱分析工作者提供了大量的技术文献和资料。目前，Lichrospher可以提供从适合分析普通疏水性化合物的键合相，到适合分离极性化合物的键合相，同时，拥有享誉全球、经典的专门适合分离碱性化合物的色谱柱——Lichrospher RP-select B。

### Lichrospher 填料参数

	填料形态	粒径	孔径	比表面积	孔体积	碳含量	封尾	PH稳定范围
RP-8	球形	5;10mm	10nm	350m <sup>2</sup> /g	1.25ml/g	12.5%	否	
RP-8e	球形	5;10mm	10nm	350m <sup>2</sup> /g	1.25ml/g	13%	是	
RP-Select B	球形	5;10mm	6nm	350m <sup>2</sup> /g	0.9ml/g	11.5%	否	
RP-18	球形	5;10mm	10nm	350m <sup>2</sup> /g	1.25ml/g	21.0%	否	
RP-18e	球形	5;10mm	10nm	350m <sup>2</sup> /g	1.25ml/g	21.6%	是	
WP 300 RP-18	球形	5;12;15mm	30nm	80m <sup>2</sup> /g	1.0ml/g	-	否	2-7.5
Si 60	球形	5;10mm	6nm	700m <sup>2</sup> /g	0.85ml/g	-	否	
Si 100	球形	5;10mm	10nm	400m <sup>2</sup> /g	1.25ml/g	-	否	
NH2	球形	5;10mm	10nm	350m <sup>2</sup> /g	1.25ml/g	4.6%	否	
CN	球形	5;10mm	10nm	350m <sup>2</sup> /g	1.25ml/g	6.6%	否	
DIOL	球形	5;10mm	10nm	350m <sup>2</sup> /g	1.25ml/g	8.0%	否	
PAH	球形	5mm	15nm	200m <sup>2</sup> /g	1.25ml/g	20.0%	否	

### Lichrospher 60 RP-select B — 碱性化合物分析柱

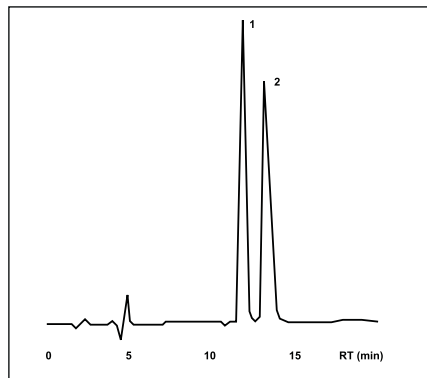
作为专门适合分离分析碱性化合物的色谱柱，其键合相为改性C<sub>8</sub>疏水基团，60Å的孔径使得其键合相密度比常规色谱柱高出很多，从而使得硅胶表面的硅醇基团暴露在流动相中的几率大大减少，如此碱性化合物的拖尾影响也将微乎其微。



Column LiChroCART® 250-4 LiChrospher®  
60 RP-select B, 5 µm  
Mobile phase A: 0.05 mol/l KH<sub>2</sub>PO<sub>4</sub>; B: Methanol  
Gradient 0-35 min 90% A - 55% A  
35-40 min 55% A - 40% A  
40-60 min 40% A  
60-70 min 40% A - 25% A  
70-80 min 25% A - 20% A  
Flow rate 0.7 ml/min  
Detection UV 285  
Temperature Room temperature  
Injection volume 20 µl  
Sample 1. a-Homocheilonine a-高白屈菜碱  
2. Chelidonine 白屈菜碱  
3. Protopine 原阿片碱  
4. Allocryptopine 别隐品碱  
5. Stylopine 刺罂粟碱  
6. Coptisine 黄连碱  
7. Berberine 小檗碱  
8. Sanguinarine 血根碱  
9. Chelerythrine 白屈菜红碱

### Lichrospher WP 300 RP-18e — 蛋白多肽专用分析柱

众所周知，大分子蛋白的分析分离需要用到大孔径的色谱柱，Lichrospher系列提供经典的300Å孔径的色谱柱。Lichrospher WP 300 RP-18e对于蛋白和多肽具有良好的选择性，其特殊的封端技术使得拖尾影响减少到最小。

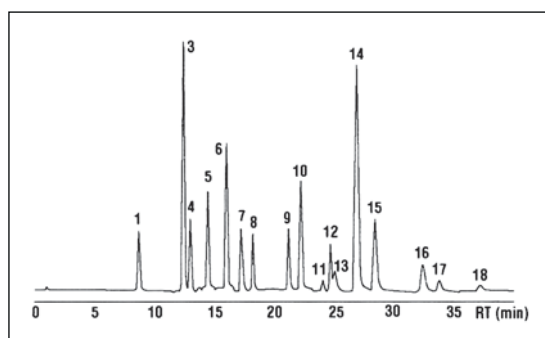


Column LiChroCART® 250-4 LiChrospher®  
WP 300 RP-18, 5 µm  
Mobile phase A: Water + 0.1% TFA  
B: Acetonitrile + 0.1% TFA  
Gradient 20 min 20% B - 60% B  
Flow rate 0.6 ml/min  
Detection UV 214  
Temperature Room temperature  
Injection volume 100 µl  
Sample 1. Angiotensin II (human)  
2. Angiotensin I (human)  
each 1 mg/ml

## Lichrospher PAH — 多环芳烃专用分析柱

[ EPA 620, EPA 550 ]

Lichrospher PAH专门被设计根据EPA 620和EPA 550 用来分离16种多环芳烃。



Column LiChroCART® 250-4 Lichrospher® PAH, 5 µm  
 Mobile phase A: Acetonitrile  
 B: Water  
 Gradient 0 - 3 min 60% A  
 3 - 15 min 60% A - 100% A  
 15 - 50 min 100% A  
 Flow rate 1.0 ml/min  
 Detection Programmed fluorescence detection:  
 Peak No. Ex nm Em nm  
 1, 3, 4 280 330  
 5 246 370  
 6 250 406  
 7 280 450  
 8 270 390  
 9, 10 265 380  
 11 - 15 290 430  
 16, 17 290 410  
 18 300 500  
 Temperature 20°C  
 Injection volume 10 µl  
 Sample

	A	B
1. Naphthaline	2.00 µg/ml	100.0 ng/ml
2. Acenaphthylene	1.54 µg/ml	n.n.
3. Acenaphthene	2.06 µg/ml	103.0 ng/ml
4. Fluorene	0.48 µg/ml	24.0 ng/ml
5. Phenanthrene	0.35 µg/ml	17.5 ng/ml
6. Anthracene	0.08 µg/ml	4.0 ng/ml
7. Fluoranthene	0.77 µg/ml	4.0 ng/ml
8. Pyrene	0.85 µg/ml	42.5 ng/ml
9. Benzo(a)anthracene	0.41 µg/ml	20.5 ng/ml
10. Chrysene	0.37 µg/ml	18.5 ng/ml
11. Benzo(e)pyrene	1.00 µg/ml	37.0 ng/ml
12. Benzo(b)fluoranthene	0.42 µg/ml	21.0 ng/ml
13. Perylene	1.00 µg/ml	36.0 ng/ml
14. Benzo(k)fluoranthene	0.42 µg/ml	23.5 ng/ml
15. Benzo(a)pyrene	0.49 µg/ml	24.5 ng/ml
16. Dibenzo(a,h)anthracene	0.36 µg/ml	18.0 ng/ml
17. Benzo(g,h,i)perylene	0.37 µg/ml	18.5 ng/ml
18. Ideno(1,2,3-cd)pyrene	0.43 µg/ml	21.5 ng/ml

## 订货信息

卡套柱 LiChroCART® 最大耐受压力250bar

固定相	粒径	柱长	内径	包装	订货号
LiChrospher® 100 RP-8	5 µm	4 mm	4 mm	10 pieces	1.50956.0001
	5 µm	25 mm	4 mm	3 pieces	1.50930.0001
	5 µm	75 mm	4 mm	3 pieces	1.50986.0001
	5 µm	125 mm	4 mm	1 piece	1.50822.0001
	5 µm	125 mm	4 mm	3 pieces	1.50942.0001
	5 µm	250 mm	4 mm	1 piece	1.50832.0001
	5 µm	250 mm	4 mm	3 pieces	1.50982.0001
	10 µm	250 mm	4 mm	1 piece	1.50842.0001
LiChrospher® 100 RP-8e	5 µm	4 mm	4 mm	10 pieces	1.50961.0001
	5 µm	125 mm	4 mm	1 piece	1.50827.0001
	5 µm	250 mm	4 mm	1 piece	1.50837.0001
	10 µm	250 mm	4 mm	1 piece	1.50847.0001
LiChrospher® 60 RP-select B	5 µm	4 mm	4 mm	10 pieces	1.50963.0001
	5 µm	25 mm	4 mm	3 pieces	1.50937.0001
	5 µm	75 mm	4 mm	3 pieces	1.50993.0001
	5 µm	125 mm	3 mm	1 piece	1.50158.0001
	5 µm	125 mm	4 mm	1 piece	1.50829.0001



## Merck液相色谱柱

固定相	粒径	柱长	内径	包装	订货号
	5 μm	125 mm	4 mm	3 pieces	1.50981.0001
	5 μm	250 mm	3 mm	1 piece	1.50155.0001
	5 μm	250 mm	4 mm	1 piece	1.50839.0001
	5 μm	250 mm	4 mm	3 pieces	1.50984.0001
	10 μm	250 mm	4 mm	1 piece	1.50742.0001
LiChrospher® 100 RP-18	5 μm	4 mm	4 mm	10 pieces	1.50957.0001
	5 μm	25 mm	4 mm	3 pieces	1.50931.0001
	5 μm	75 mm	4 mm	3 pieces	1.50987.0001
	5 μm	125 mm	3 mm	1 piece	1.50159.0001
	5 μm	125 mm	4 mm	1 piece	1.50823.0001
	5 μm	125 mm	4 mm	3 pieces	1.50943.0001
	5 μm	250 mm	3 mm	1 piece	1.50154.0001
	5 μm	250 mm	4 mm	1 piece	1.50833.0001
	5 μm	250 mm	4 mm	3 pieces	1.50983.0001
	10 μm	250 mm	4 mm	1 piece	1.50843.0001
	10 μm	250 mm	10 mm	1 piece	1.50853.0001
LiChrospher® 100 RP-18e	5 μm	4 mm	4 mm	10 pieces	1.50962.0001
	5 μm	25 mm	4 mm	3 pieces	1.50936.0001
	5 μm	125 mm	4 mm	1 piece	1.50828.0001
	5 μm	125 mm	4 mm	3 pieces	1.50734.0001
	5 μm	250 mm	4 mm	1 piece	1.50838.0001
	5 μm	250 mm	4 mm	3 pieces	1.50995.0001
	10 μm	250 mm	4 mm	1 piece	1.50848.0001
	10 μm	250 mm	10 mm	1 piece	1.50858.0001
LiChrospher® WP 300 RP-18	5 μm	4 mm	4 mm	10 pieces	1.50140.0001
	5 μm	250 mm	4 mm	1 piece	1.50137.0001
LiChrospher® WP 300 RP-18e	5 μm	250 mm	4 mm	1 piece	1.50224.0001
LiChrospher® Si 60	5 μm	4 mm	4 mm	10 pieces	1.50955.0001
	5 μm	25 mm	4 mm	3 pieces	1.50928.0001
	5 μm	125 mm	4 mm	1 piece	1.50820.0001
	5 μm	250 mm	4 mm	1 piece	1.50830.0001
	10 μm	250 mm	4 mm	1 piece	1.50840.0001
	10 μm	250 mm	10 mm	1 piece	1.50850.0001
LiChrospher® Si 100	5 μm	250 mm	4 mm	1 piece	1.50316.0001
LiChrospher® 100 NH2	5 μm	4 mm	4 mm	10 pieces	1.50958.0001
	5 μm	25 mm	4 mm	3 pieces	1.50932.0001
	5 μm	125 mm	4 mm	1 piece	1.50824.0001
	5 μm	250 mm	4 mm	1 piece	1.50834.0001
	10 μm	250 mm	4 mm	1 piece	1.50844.0001
LiChrospher® 100 CN	5 μm	4 mm	4 mm	10 pieces	1.50959.0001
	5 μm	125 mm	4 mm	1 piece	1.50825.0001
	5 μm	250 mm	4 mm	1 piece	1.50892.0001
	10 μm	250 mm	4 mm	1 piece	1.50845.0001
LiChrospher® DIOL	5 μm	4 mm	4 mm	10 pieces	1.50960.0001
	5 μm	125 mm	4 mm	1 piece	1.50826.0001
	5 μm	250 mm	4 mm	1 piece	1.50836.0001
LiChrospher® PAH	5 μm	250 mm	3 mm	1 piece	1.50156.0001
	5 μm	4 mm	4 mm	10 pieces	1.50148.0001
	5 μm	250 mm	4 mm	1 piece	1.50149.0001